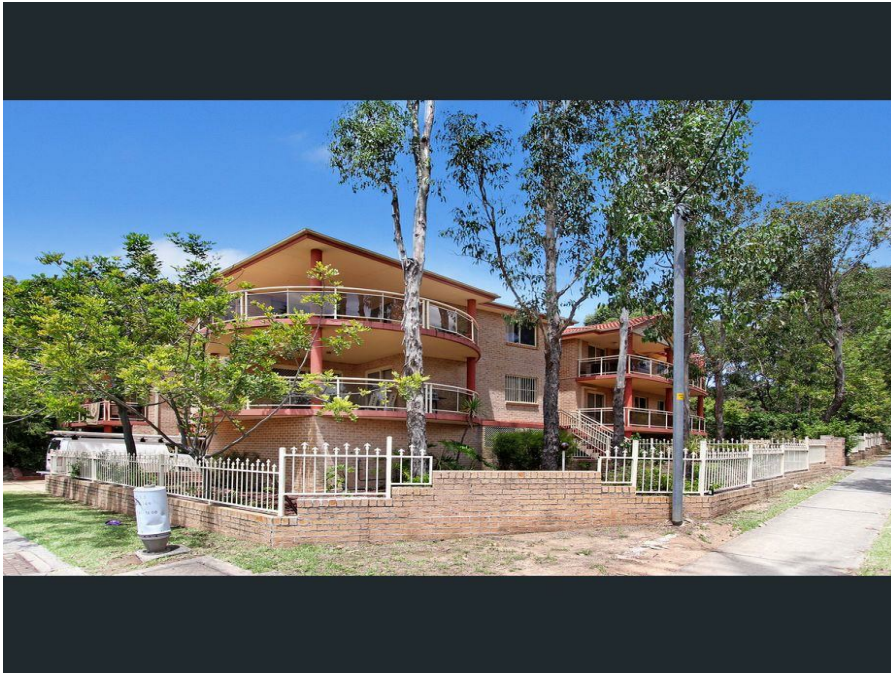


4/62-64 The Esp, Guildford, NSW 2161

Leased - \$390

Unit 2    



### Great Location - 2 Bedroom Unit

Spacious 2 Bedroom unit offering, carpet and tiles throughout, generous size living and dining room, built-in wardrobe in main bedroom, vertical blinds throughout, internal laundry, lock-up garage, close to transport and all amenities.

**Open for Inspection**

By Appointment.

#### Listed By



Moustafa Kanjou

Mobile: 0413 684 745

